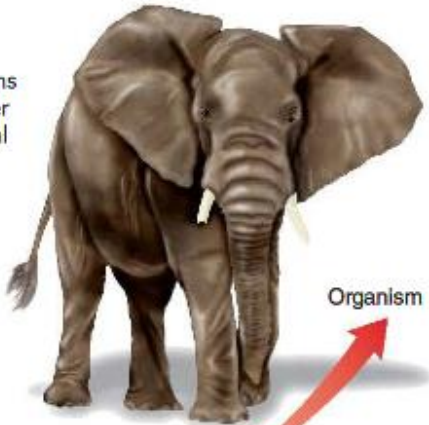


Levels of Organization

Organism
Organ systems work together in a functional organism.



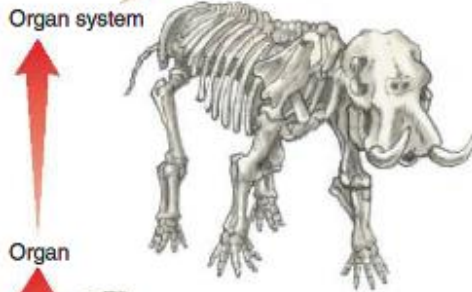
Organism



Population
A population consists of organisms of the same species.

Population

Organ system
(e.g., skeletal system) Tissues and organs make up organ systems.



Organ system

Organ
(e.g., bone) Tissues form organs.



Organ

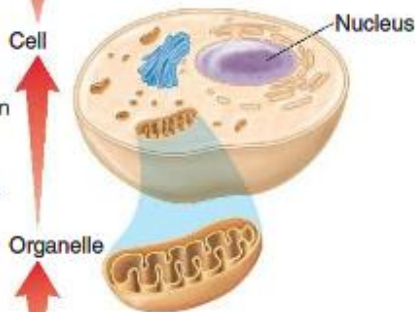
Tissue
(e.g., bone tissue) Cells associate to form tissues.



Tissue

Bone cells

Cellular level
Atoms and molecules make up the cytoplasm and form organelles, such as the nucleus and mitochondria (the site of many energy transformations). Organelles perform various functions of the cell.

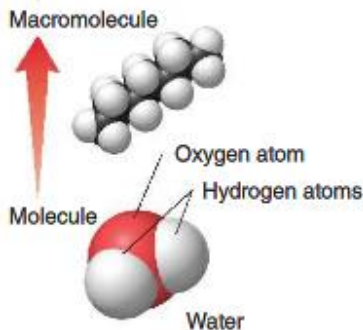


Cell

Nucleus

Organelle

Chemical level
Atoms join to form molecules. Macromolecules are large molecules such as proteins and DNA.



Macromolecule

Molecule

Oxygen atom

Hydrogen atoms

Water



Community
The populations of different species that populate the same area make up a community.

Community



Ecosystem
A community together with the nonliving environment forms an ecosystem.

Ecosystem



Biosphere
Earth and all of its communities constitute the biosphere.

Biosphere